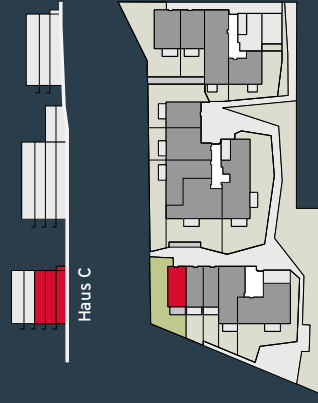


## TOP C01 | EG, OG1, OG2

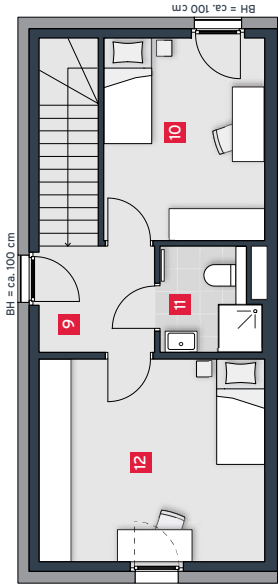
|                     |                      |
|---------------------|----------------------|
| <b>Wohnfläche</b>   | 109,0 m <sup>2</sup> |
| <b>Garten</b>       | 111,3 m <sup>2</sup> |
| <b>Terrasse</b>     | 8,0 m <sup>2</sup>   |
| <b>Balkon</b>       | 5,7 m <sup>2</sup>   |
| <b>Kellerabteil</b> | 7,9 m <sup>2</sup>   |
| 1 Schrankraum       | 3,7 m <sup>2</sup>   |
| 2 Vorraum 1         | 3,7 m <sup>2</sup>   |
| 3 WC 1              | 1,8 m <sup>2</sup>   |
| 4 Wohnküche         | 28,7 m <sup>2</sup>  |
| 5 Vorraum 2         | 7,2 m <sup>2</sup>   |
| 6 Bad 1             | 6,4 m <sup>2</sup>   |
| 7 WC 2              | 1,9 m <sup>2</sup>   |
| 8 Zimmer 1          | 19,5 m <sup>2</sup>  |
| 9 Vorraum 3         | 4,4 m <sup>2</sup>   |
| 10 Zimmer 2         | 11,6 m <sup>2</sup>  |
| 11 Bad 2            | 3,3 m <sup>2</sup>   |
| 12 Zimmer 3         | 16,2 m <sup>2</sup>  |



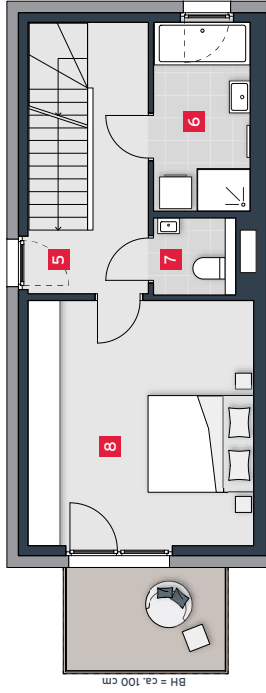
Haus C

## VERKAUF

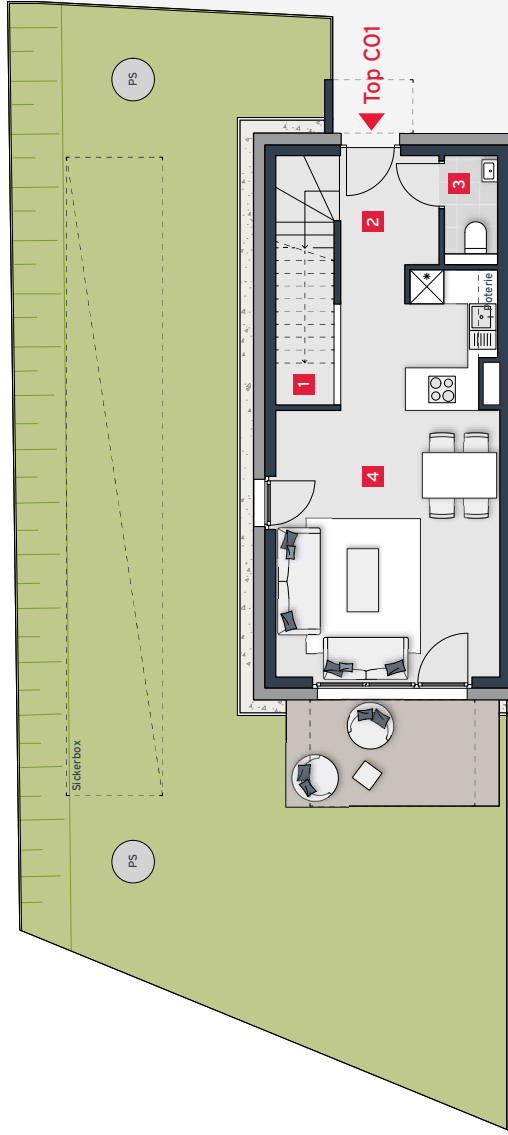
Luca Vogelsinger  
Tel. +43 1 7150030-3228  
Mobil +43 664 8348138  
luca.vogelsinger@rhombert.com  
www.rhombert.com



2. Obergeschoß



1. Obergeschoß



Erdgeschoß



A3 | M 1:100

